

Leveraging Data Build Tool for Efficient Data Management in Data Center Architectures

A. Senthil Murugan

Assistant Professor, Department of
Computer Science and Engineering,
St. Peter's Engineering College,
Hyderabad, Telangana, India.
viha.senthil@gmail.com

S.K. Saravanan

Professor, Department of Big Data
and Network Security, Saveetha School
of Engineering, Saveetha Institute of
Medical and Technical Sciences,
Saveetha University,
Chennai, Tamil Nadu, India
saravanansk.sse@saveetha.com

G. Sri Nidhya

Associate Professor, Department of
English, S.A. Engineering College
(Autonomous),
Chennai, Tamil Nadu, India
srinidhya@saec.ac.in

K. Sasikala

Associate Professor, Department of
Electrical & Electronics Engineering,
Vels Institute of Science, Technology &
Advanced Studies (VISTAS),
Chennai, Tamil Nadu, India
sasikala1410@gmail.com

Pramod Pandey

Symbiosis Institute of Technology,
Nagpur Campus, Symbiosis
International (Deemed University),
Pune, Maharashtra, India
pramod.pandey@sitnagpur.siu.edu.in

Elankurisil Arasan

Professor,
Department of Electrical and
Electronics Engineering
Adhiparasakthi Engineering College
Melmaruvathur, Tamil Nadu, India
elankurisil@apec.edu.in

Abstract—Data Build Tool simplifies data transformation, modelling, and analytics. Optimizing data pipelines ensures data processing integrity, scalability, and automation. Data Build Tool integration with current data warehouses improves decision-making with real-time data processing, version control, and collaboration. Data Build Tool improves data governance, quality assurance, and workflow efficiency via modular and SQL-based transformation. Automating dependency resolution and repeatability using Data Build Tool makes data engineering more dependable and human-free. Scalable infrastructure enables resource optimisation and cost-effective data center operations. Data Build Tool allows flexible data processing, systematic data management, and performance tuning. For digital transformation and cloud environments, automation and real-time analytics provide flexible and intelligent data center designs.

Keywords—dbt (Data Build Tool), Data Transformation, Data Pipeline Management, Data Center Architecture, Data Governance

I. INTRODUCTION

Efficient data management in data centres is essential for scalability, performance, and real-time processing. The sophisticated Data Build Tool (dbt) transforms, models, and organises current data centre data operations. Complex ETL pipelines that need human intervention and maintenance are used in traditional data management. Data teams may develop flexible, scalable, and automated processes using SQL-based transformations using dbt. Data centre settings with dbt improve data integrity, lineage tracking, and performance optimisation, making data management more organised and efficient.

Integrating dbt to optimise data centre designs is a priority. An organised and automated system for data translation, governance, and performance monitoring is the aim. Data processing is more efficient, scalable, and maintainable using dbt's modular and SQL-based workflow automation. Data-driven decision-making is trustworthy and efficient when data inconsistencies, query performance, and transformation logic are addressed. Data centre analytics and operational efficiency increase with a standardised data management solution.

A DBT-based data management framework optimises data transformation and process automation in the proposed system. The architecture includes data modelling, automatic transformation, version control, and performance optimisation. Data modelling structures raw data into well-defined models to guarantee consistency and reuse. Automated transformations streamline SQL-based queries, eliminating mistakes and human labour. Version control tracks transformation logic changes, assuring data integrity and auditability. Query execution times and data centre resource utilisation are improved via performance optimisation. Data management is simplified, transparent, and scalable for large-scale data processing using the suggested approach.

DBT integration into data centre designs makes numerous important advances. Structured and modular data transformation frameworks simplify ETL procedures and reduce human involvement, enhancing efficiency. Second, an automated version control system assures data integrity and traceability, allowing data model changes to be tracked. Third, query optimisation improves latency and resource utilisation. Finally, a better governance and documentation structure makes data dependencies, lineage, and transformation logic auditable and compliant. These contributions streamline data management and enable scalable, high-performance analytics procedures, advancing contemporary data centre designs.

Data complexity, transformation inefficiencies, and governance are becoming issues for data centers. Traditional data transformation methods involve human intervention, causing workflow errors and inefficiency. Using automated, modular, and SQL-driven data transformations, dbt delivers a structured and scalable solution. Data centers utilize dbt for data management to standardize data models, automate pipeline execution, and ensure auditability. Structured data transformation frameworks improve operational efficiency, processing speed, and data consistency across analytical and operational workloads.

Existing data translation methods, data center design issues, and data management automation are covered in

Section 2. Section 3 describes the proposed dbt-based framework's data modelling, transformation automation, and query optimisation. Section 4 compares dbt-based data management to ETL and evaluates its performance. Section 5 discusses dbt adoption, data governance improvements, and scalable data center designs. Conclusion emphasizes how dbt optimizes data management by improving workflow automation, data transformation efficiency, and performance scalability in contemporary data centers.

II. LITERATURE SURVEY

Cloud-native solutions improve data transparency and processing. AWS secures and simplifies scalable data processing and display, improving hospital pricing transparency. Scalable systems provide easy integration of big datasets, improving processing and accessibility for healthcare financial management stakeholders [1]. SME digital transformation has been aided by structured data pipeline principles. Digitising services automates data gathering, processing, and visualisation, enhancing corporate productivity. Pipelines provide interoperability and real-time analytics, improving operational performance in competitive corporate situations [2]. Modern data storage systems benefit from database migration from data warehouses to clouds. Companies may scale, save money, and enhance query performance by switching from Teradata to Google BigQuery. Cloud solutions let organisations manage huge datasets while meeting security and performance demands [3]. Dialectical behaviour therapy has led to digital apps to improve eating disorder treatment. Resilience-based training apps help people use DBT. Digital solutions improve DBT accessibility and scale mental health care evidence-based therapies [4].

Qualitative reviews of DBT participants have examined its long-term benefits. Personal experiences demonstrate DBT's long-term effects on emotional control and interpersonal efficacy. Understanding long-term results optimises intervention methods [5]. Skill-based dialectical behaviour therapy approaches have been studied for therapeutic effects. Therapeutic treatments show that organised involvement in DBT programs is essential for long-term emotional dysregulation management [6]. Clinical efficacy of telepsychology in dialectical behaviour therapy has been assessed. DBT therapies for distant patients are accessible via digital therapy. Teletherapy approaches increase organised mental health care [7]. A comprehensive mapping of diversity-based testing approaches illuminates software validation metrics. Structured assessment approaches improve quality assurance and make software systems more robust and adaptive [8].

The regular use of dialectical behaviour therapy has been evaluated nationally. Structured DBT therapies increase emotional regulation and behaviour in adolescent mental health care. Standardised DBT implementations promote therapy adherence, making it a viable emotional dysregulation treatment [9]. Extreme data processing is optimised via graph-based data intake. Graph-based approaches improve machine learning for scalable and efficient data processing. The frameworks enable high-performance data structure for corporate applications [10]. Enterprise applications, especially big language model-powered question answering systems, use knowledge graphs to build trust. These advances improve business intelligence

data interpretation automation [11]. DBT picture mass area segmentation is now automated using deep convolutional neural networks. In breast tomosynthesis imaging, dilated CNN architectures improve segmentation accuracy and reduce misclassification. Diagnostic breast imaging is more reliable with these advances [12].

Telehealth for dialectical behaviour therapy has been assessed in mental health care. Virtual DBT ensures organised therapy and therapeutic efficacy. Digital mental health frameworks increase patient outcomes via virtual therapy [13]. For data science and engineering process automation, multimodal agents were created. Data processing is automated by AI-driven platforms, boosting engineering procedures. AI automates structured data processing, improving engineering and data science efficiency. These innovations modernise data-intensive procedures [14]. To improve data processing and analytics, multidisciplinary research has combined contemporary data stack technologies with DBT. DBT in structured data processes improves operational flexibility and data management efficiency for analytics-driven organisations [15]. Dialectical behaviour therapy uses virtual reality to improve treatments. VR enhances DBT by allowing patients to practise skills in interactive situations. These advances increase DBT treatment results [16].

Cloud-based analytics relies on scalable data pipelines for data processing and transformation. Scalable pipelines improve cloud data flow, accessibility, and computing efficiency. Cloud-based pipelines provide cost-effective, high-performance data processing [17]. Open trials of dialectical behaviour therapy skills training have shown efficacy in varied groups. Structured DBT skills training promotes treatment involvement and makes therapy programs more accessible and effective [18]. DBT's robust transformation methods have improved data process modernisation. Automation streamlines data procedures, eliminating human involvement and enhancing processing accuracy. Recent advances increase data governance and operational effectiveness in current analytical systems [19]. For better categorisation, digital breast tomosynthesis imaging uses self-supervised learning. In unbalanced datasets, advanced initialisation and fine-tuning improve diagnostic accuracy and picture classification. Artificial intelligence-driven categorisation ensures radiological assessment scalability and versatility [20].

III. PROPOSED SYSTEM

dbt simplifies data transformation with modular, scalable, and version-controlled workflows. Large datasets are consistent and accurate with automated data modelling. SQL-based transformations optimise analytics and reporting data pipelines. By updating just updated records, incremental processing optimises speed. Figure 1 shows an organised block diagram of how dbt (Data Build Tool) improves data centre data management. External API & Streaming Data (Database Symbol) intake of real-time data from logs, IoT devices, and cloud services begins the pipeline. Data modelling, cleaning, and structuring before storing are done in dbt's ETL Pipeline (File Symbol). The Data Warehouse (Node Symbol) optimises query speed and data accessibility as the core repository.

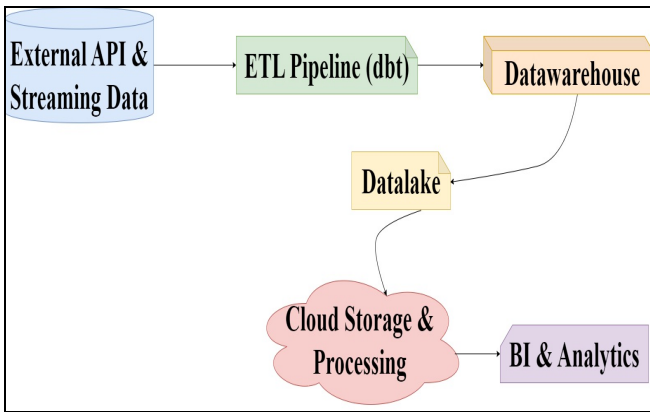


Fig.1. Leveraging dbt Data Build Tool for Efficient Data Management in Data Centre Architectures

A. Intelligent System Design for dbt-Based Data Transformation in Data Centers

Modular design scales data transformation and analytics. SQL transformation models standardise data management. Secure role-based access control safeguards sensitive data. Automated lineage tracking enhances traceability and regulatory compliance. Multi-environment data processing is flexible with cloud-native deployment. Figure 2 shows an improved block diagram design for contemporary data centres' dbt data transformation and integration. Cloud Data Integration (Cloud Symbol) takes raw data from APIs, logs, and real-time streams. Unstructured data is saved in Raw Data Storage (Folder Symbol) before processing. The dbt Transformation Engine (Component Symbol) transforms raw data into clean, organised, and optimised datasets for analytics and business applications.

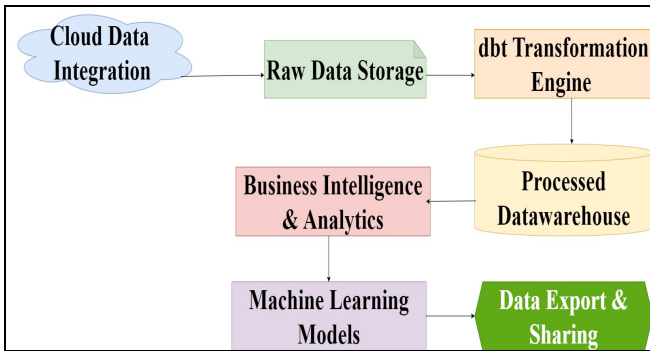


Fig.2. Leveraging dbt Data Build Tool for Efficient Data Management in Data Center Architectures

B. Advanced Technologies Powering dbt-Based Data Pipeline Automation in Data Centers

Data translation across hybrid environments is easy with cloud-native architecture. Data quality and consistency improve with AI-powered anomaly detection. API-driven execution combines business data management systems securely. Automated SQL transformations speed up high-volume data processing. Data pipeline alterations are prevented via role-based authentication. Figure 3 shows the structured data processing pipeline utilising the dbt (Data Build Tool) in data centre designs. Ingestion of raw data from numerous sources is followed by extraction and loading into the system. Data is pre-processed via the ETL process before dbt transformations standardise, clean, and model it

for analysis. In the staging layer, converted data is validated and tested for quality and consistency.

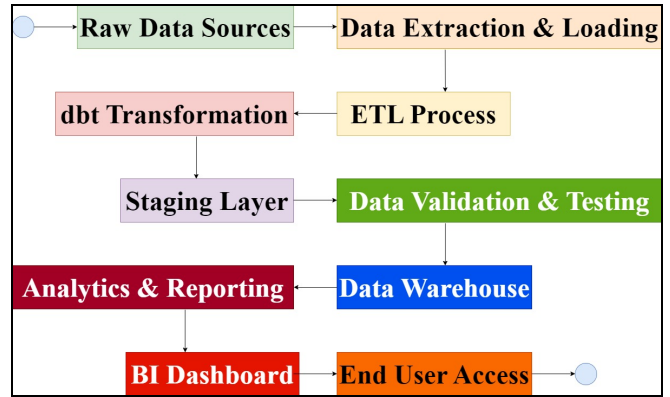


Fig.3. Workflow Diagram for Leveraging dbt Data Build Tool in Data Center Architectures

C. Key Functionalities and Capabilities of dbt for Data Transformation Workflows

Automated SQL transformations standardise analytics and reporting data processing. Large-scale data centres benefit from incremental data upgrades. Data validation in real time assures correctness before business application connection. Secure API-driven automation optimises cross-platform workflow. Cloud-native deployment improves hybrid data architecture flexibility. Role-based access control improves data management security. Figure 4 shows a new Overview Diagram for effective data management utilising dbt (Data Build Tool) in data centre infrastructures. External data sources and API feeds enter the Data Ingestion Layer for easy data gathering. Before modelling, cleaning, and optimising in the dbt Transformation Engine, ETL Processing refines data. Before structured storage in the Central Data Warehouse, processed data flows via the Quality & Governance Layer for integrity.

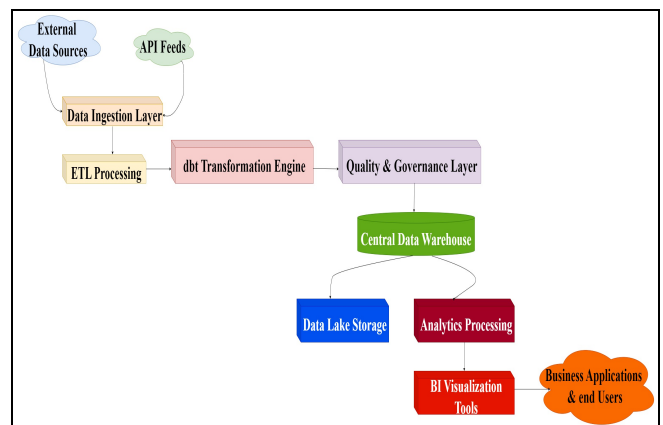


Fig.4. Overview Diagram for Leveraging dbt Data Build Tool in Data Center Architectures

SQL-based data transformations turn raw data into structured representations for consistency and optimised data processing. Git-based version control improves data accuracy and governance by tracking model changes. The Pseudo Code: dbt (Data Build Tool) Implementation is given below.

1. Initialize dbt Environment:
 - Install dbt and configure the project
 - Set up database connection (PostgreSQL, Snowflake, BigQuery, etc.)
 - Define dbt profiles.yml with credentials
2. Load Source Data:
 - Define source tables in sources.yml
 - Ingest raw data from the database
 - Perform data quality checks
3. Create dbt Models:
 - Define SQL transformations in .sql files
 - Implement staging models to clean and standardize data
 - Build intermediate models for business logic
 - Create final models for reporting
4. Execute dbt Workflow:

WHILE pipeline is active:

 - a. Run `dbt run` to execute transformations
 - b. Apply incremental updates with `dbt incremental`
 - c. Perform data testing with `dbt test`
 - d. Generate documentation with `dbt docs generate`
 - e. Log execution results and handle errors
5. Monitor and Optimize Performance:
 - Track model execution time
 - Optimize queries with indexing and partitioning
 - Use dbt snapshots to track historical data changes
6. Deploy and Store Processed Data:
 - Store transformed data in warehouse tables
 - Export reports and dashboards for business users
 - Enable data access via BI tools (Looker, Tableau)
7. End Workflow or Continue Scheduled Runs

Explanation:

1. *Initialize dbt Environment*
 - o Install dbt and configure the project folder.
 - o Set up database connections in profiles.yml for PostgreSQL, Snowflake, or BigQuery.
 - o Define user credentials and data warehouse settings.
2. *Load Source Data*
 - o Define source tables in sources.yml.
 - o Ingest raw data from the data warehouse.
 - o Apply data quality checks to ensure consistency.
3. *Create dbt Models*
 - o Use SQL scripts to transform raw data.
 - o Implement staging models for data cleaning and normalization.
 - o Use intermediate models for business logic transformations.
 - o Define final models for reporting and analytics.
4. *Execute dbt Workflow*
 - o Run data transformations using dbt run.

- o Use incremental processing with dbt incremental to improve performance.
 - o Validate data with dbt test to check for null values, uniqueness, and referential integrity.
 - o Generate automated documentation using dbt docs generate.
 - o Log execution results and handle errors.
5. *Monitor and Optimize Performance*
 - o Monitor execution time and optimize queries.
 - o Use indexing and partitioning for better performance.
 - o Implement dbt snapshots to track historical changes.
 6. *Deploy and Store Processed Data*
 - o Save transformed data in warehouse tables.
 - o Provide data access for business intelligence (BI) tools like Looker, Tableau, and Power BI.
 - o Enable scheduled dbt runs for automated processing.
 7. *End Workflow or Continue Scheduled Runs*
 - o The dbt pipeline runs on a schedule or on-demand.

The process continues based on data refresh cycles.

IV. RESULTS AND DISCUSSION

Incremental data processing updates only updated records, improving performance. Workload balancing using AI optimises computing resources. Automated caching reduces large-scale transformation query latency. In high-demand applications, parallelised SQL execution speeds processing. Transformation model alterations are protected by secure access. Figure 5 compares dbt Data Build Tool effects on data centre query optimisation and load balancing. The dataset compares typical ETL methods with dbt models for query optimisation, data transformation speed, schema validation, load balancing, and ETL efficiency. Optimised dbt reduces data errors by improving query execution performance and schema validation. Dbt-Model C load balancing improves efficiency by distributing workload evenly across data streams.

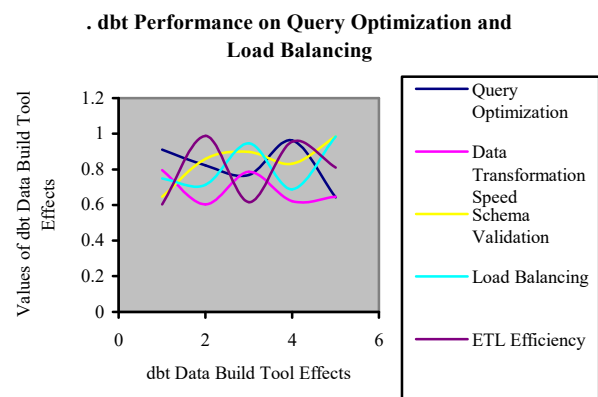


Fig.5. dbt Performance on Query Optimization and Load Balancing

High-volume data transformation benefits from cloud-native scalability. Automated parallel execution speeds SQL processing. Multi-cloud task distribution is improved via distributed computing frameworks. Secure API interfaces link business data platforms seamlessly. Version-controlled transformation models enable scalable, collaborative operations. Figure 6 shows dbt's data centre scalability and workflow integration. Data lineage tracking, pipeline scalability, automated testing, resource allocation, and workflow integration are scored.

dbt Scalability and Workflow Integration in Data Centers

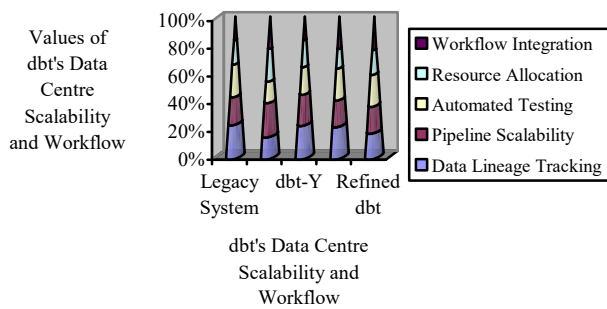


Fig.6. dbt Scalability and Workflow Integration in Data Centers

Pre-configured API interfaces provide data warehouse and BI tool compatibility. Data transformation operations are secured using authentication. Hybrid and multi-cloud setups benefit from cloud-native deployment. Data governance is ensured via automated lineage tracking. Across remote infrastructures, scalable orchestration frameworks optimise process execution. Figure 7 shows how dbt improves data governance and error management in data centres. Various dbt implementations are compared for data consistency, version control, error handling, performance benchmarking, and data governance. Advanced dbt ranks top in data governance and performance benchmarks, assuring data integrity compliance. Version control in dbt-3 and dbt-2 enables better data tracking and rollback than standard configurations.

. dbt Optimization for Data Governance and Error Handling

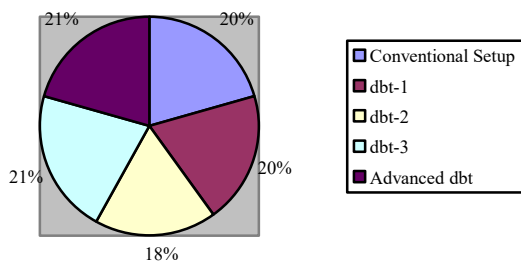


Fig.7. dbt Optimization for Data Governance and Error Handling

V. CONCLUSION

DBT simplifies data translation, modelling, and analytics in data centre architecture. Optimise data pipeline management for consistency, scalability, and automation. Adding dbt to data warehouses enables real-time data

transformations, version control, and collaboration for enhanced decision-making. Using dbt's modular and SQL-based transformation capabilities will increase data governance, quality assurance, and workflow efficiency. Dbt automates dependency resolution and repetition, simplifying data engineering and improving dependability. Scalable infrastructure makes data centre operations cheaper and more efficient. Agile data processes can arrange and optimise performance using dbt. New automation and real-time analytics enable flexible and intelligent data centre architectures for digital transformation and cloud settings.

REFERENCES

- [1] A. Ahmed and C. Jayapandian, "A Cloud-Native Approach to Hospital Price Transparency: Leveraging AWS for Scalable Data Processing and Presentation," 2024 IEEE International Conference on Big Data (BigData), pp. 4959-4968, 2024.
- [2] A. Chikhalkar, M. Brünninghaus, S. Deppe, E. Bicker, and C. Röcker, "A Data Pipeline Concept for Digitizing Services in Small and Medium-Sized Companies," JOIV: International Journal on Informatics Visualization, vol. 9, no. 1, pp. 333-341, 2025.
- [3] A. G. Parthi, B. Pothineni, D. Jayabalan, A. R. Banarse, and D. Maruthavanan, "Efficient Migration of Databases from Teradata to Google BigQuery: A Framework for Modern Data Warehousing," Journal of Software Engineering (JSE), vol. 2, no. 2, pp. 55-64, 2024.
- [4] C. Anderson, M. Fuller - Tyszkiewicz, M. Messer, and J. Linardon, "Resilience eDBT: Development and Usability Evaluation of a Dialectical Behavior Therapy Skills Training App for Eating Disorders," International Journal of Eating Disorders, vol. 57, no. 11, pp. 2278-2284, 2024.
- [5] C. Gillespie, M. Murphy, M. Kells, and D. Flynn, "Individuals Who Report Having Benefitted from Dialectical Behaviour Therapy (DBT): A Qualitative Exploration of Processes and Experiences at Long-Term Follow-Up," Borderline Personality Disorder and Emotion Dysregulation, vol. 9, no. 1, pp. 1-14, 2022.
- [6] R. Raman, L. Ramalingam, K. Kishorbbhai Sutaria, M. Kamthan, S. Sangeetha and S. Murugan, "Smart Warehouse Solutions for Efficient Onion Buffer Stock Management System," 7th International Conference on Electronics, Communication and Aerospace Technology, pp. 1260-1265, 2023.
- [7] P. Thirumaraiselvan, S. Jayashri, "Numerical modelling of ultra wide band signal propagation in human abdominal region", International Journal of Biomedical Engineering and Technology, Inderscience Publishers, vol. 27, no. 1/2, 2018.
- [8] I. T. Elgendy, R. M. Hierons, and P. McMinn, "A Systematic Mapping Study of the Metrics, Uses and Subjects of Diversity - Based Testing Techniques," Software Testing, Verification and Reliability, vol. 35, no. 2, pp. 1-45, 2025.
- [9] C. S. Ranganathan, R. Raman, K. K. Sutaria, R. A. Varma and S. Murugan, "Network Security in Cyberspace Using Machine Learning Techniques," 7th International Conference on Electronics, Communication and Aerospace Technology, pp. 1755-1759, 2023.
- [10] N. Mohankumar, P. L. K. K. Reddy, C. Uthayakumar, P. S. M. Rajmohan and C. Srinivasan, "Applying Johnson's Algorithm for Efficient Shortest Path Analysis in Big Data," 6th International Conference on Mobile Computing and Sustainable Informatics, pp. 620-626, 2025.
- [11] J. Sequeda, D. Allemang, and B. Jacob, "Knowledge Graphs as a Source of Trust for LLM-Powered Enterprise Question Answering," Journal of Web Semantics, vol. 85, no. 1, pp. 1-6, 2025.
- [12] J. Ye, W. Yang, J. Wang, X. Xu, L. Li, C. Xie, G. Chen, X. Wang, and X. Lai, "Automated Segmentation of Mass Regions in DBT Images Using a Dilated DCNN Approach," Computational Intelligence and Neuroscience, vol. 2022, no. 1, pp. 1-10, 2022.
- [13] T. R. Saravanan, A. R. Rathinam, J. Lenin, A. Komathi, B. Bharathi, and S. Murugan, "Revolutionizing Cloud Computing: Evaluating the Influence of Blockchain and Consensus Algorithms," 3rd International Conference on Smart Generation Computing, Communication and Networking, pp. 1-6, 2023.
- [14] R. Cao, F. Lei, H. Wu, J. Chen, Y. Fu, H. Gao, X. Xiong, H. Zhang, W. Hu, Y. Mao, and T. Xie, "Spider2-v: How Far Are Multimodal Agents from Automating Data Science and Engineering

- Workflows?," *Advances in Neural Information Processing Systems*, vol. 37, pp. 107703-107744, 2025.
- [15] R. Lakshmanasamy and G. Ganachari, "Integration of Dbt With Modern Data Stack Technologies," *International Journal for Multidisciplinary Research*, vol. 5, no. 5, pp. 1-6, 2023.
- [16] R. Lamb, A. Crowe, J. Stone, L. Annetta, A. Zambone, and T. Owens, "Virtual Reality Enhanced Dialectical Behavioural Therapy," *British Journal of Guidance & Counselling*, vol. 51, no. 4, pp. 491-512, 2023.
- [17] R. Raman, J. B. J. Peter, A. A. Gokhale, J. Manikandan, E. N. Ganesh and C. Srinivasan, "Implications of Brewer's Rule in Data Warehouse Design," *7th International Conference on I-SMAC*, pp. 349-354, 2023.
- [18] S. P. Maniraj, C. S. Ranganathan, and S. Sekar, "Securing web applications with owasp zap for comprehensive security testing", *International Journal of Advances in Signal and Image Sciences*, vol. 10, no. 2, pp. 12-23, 2024.
- [19] A. R. Rathinam, B. S. Vathani, A. Komathi, J. Lenin, B. Bharathi and S. Murugan, "Advances and Predictions in Predictive Auto-Scaling and Maintenance Algorithms for Cloud Computing," *2nd International Conference on Automation, Computing and Renewable Systems*, pp. 395-400, 2023.
- [20] Y. Du, R. J. Hooley, J. Lewin, and N. C. Dvornek, "SIFT-DBT: Self-Supervised Initialization and Fine-Tuning for Imbalanced Digital Breast Tomosynthesis Image Classification," *2024 IEEE International Symposium on Biomedical Imaging (ISBI)*, pp. 1-5, 2024.