

AI TIME MACHINE USING WEB TECHNOLOGY

1st Senthil Kumar R.

*Department of Advanced computing and Analytics
Vels Institute of Science, Technology & Advanced Studies
Chennai, India
ravisenthilkumar2003@gmail.com*

2nd Dr. R. Durga

*Department of Advanced computing and Analytics
Vels Institute of Science, Technology & Advanced Studies
Chennai, India
durga.scs@vistas.ac.in*

Abstract:*The AI Time Machine is a modern web application that utilizes artificial intelligence to transform human faces across time. The concept is straightforward: the application will show what you may have looked like in the past or what you may look like in the future. The application utilizes deep learning, image processing, and modern web technology to create realistic images. The application asks for an image, and the deep learning model will recognize the features of the image and make the desired changes, such as aging the image or reversing the aging. The application focuses on the interactive experience between humans and artificial intelligence, making the experience fun, engaging, and entertaining, while also showing the application of artificial intelligence. The final product is aesthetically pleasing and maintains the facial identity of the human. The system isn't based on chaos and luck. It learns and improves based on patterns in the data sets that are used. It is fast and efficient and does its best to prevent delays. The app demonstrates the creative potential of AI. It provides its results using optimized algorithms to ensure faster execution. It also prioritizes the privacy of its users by avoiding the storage of images if not necessary. It can serve multiple users simultaneously and is ready for further improvements and new features. The interface is also easy to understand and use. This AI system demonstrates its potential to be integrated into our daily applications. It provides technical and practical value. The results obtained so far indicate that the predictions made by the AI are accurate. This demonstrates that AI has potential beyond its common applications. It can be extended to new web-based applications and can be a catalyst for new ideas. It is efficient and reliable and can be regarded as one of the best examples of AI and its potential to be used in facial prediction technologies.*

1. INTRODUCTION

Artificial Intelligence has become one of the most prominent aspects of modern technology. It has affected numerous aspects of our lives, from medicine to money and even movie magic. One of the most interesting aspects of AI is its ability to process images and recognize faces. This is precisely the case for the AI Time Machine. It is a project

that aims to predict the changes that will be seen in faces in the future. In other words, it is a simulation of how a person might age. The old ways of predicting how a person might age in the future were quite clumsy and not very accurate. However, thanks to the power of deep learning algorithms, the results are now more believable. It is a web-based application that can be accessed by anyone. It does not require any knowledge of programming and has a user-friendly interface. The project demonstrates the position of AI in relation to day-to-day life and, at the same time, harnesses the power of creativity that is associated with machine learning. The project is precise and provides an excellent user experience. The front-end and back-end technologies are integrated in an effective manner. The project is scalable and has room for further development. Data privacy is not overlooked in this project. The use of real-time output is effective in enhancing interaction.

The first section is used to create awareness about the project and its position in the larger picture. It provides an idea of what the project is all about and its significance. The concept is new and interesting and provides new avenues for exploring AI. The project is not only useful but can be used to create awareness about how to implement AI. The introduction provides a clear and concise overview of the system.

2. LITERATURE SURVEY

literature review The field of facial recognition and transformation has made significant progress in recent years. Initially, researchers heavily relied on simple image processing methods, which were often found wanting in terms of precision and reality. However, once machine learning was introduced into the field, significant milestones were achieved. Convolutional Neural Networks were found to be integral in image processing, and deep learning was introduced in the recognition of facial features. The use of Generative Adversarial Networks was also introduced in image transformation, allowing realistic transformations of faces. Several researchers have worked on face aging and de-aging, often using large datasets such as CelebA and FG-NET to provide a wide range of facial images. Some of these methods were successful in

providing high-quality images; however, most of these methods were often found wanting in terms of real-time processing as well as usability. The lighting conditions and the quality of images play a crucial role in the performance of the system as well. Hybrid approaches have also been incorporated to improve the accuracy of the results, with some using facial landmark detection to improve the quality of the results obtained. Other approaches include the use of neural style transfer to improve the performance of the results obtained. However, some of the weaknesses associated with the existing approaches include the lack of consideration of data privacy, the need for high computing power, and the lack of integration with the internet. The project addresses all the weaknesses identified, ensuring the usability, performance, and security of the system developed. The literature survey helps to understand what already exists, the pros and cons of the existing approaches, and the choice of the right algorithms for the project, thereby creating a strong foundation for the project and justifying the reason for the project.

3. PROPOSED METHODOLOGY

The AI Time Machine project uses a streamlined and efficient approach to achieve accurate results. This process begins when an image is uploaded by the user through the web interface. The first step in this process is preprocessing, where images are resized, normalized, and denoising is applied to obtain an image in an ideal state. The next step is detecting facial features in the image using AI models. Once the image is recognized as containing facial features, it is passed to the transformation module, where aging or de-aging effects are applied to the image. These effects are achieved by using images learned by the AI model. Once these effects are applied, image enhancement is applied to improve image quality. The final image is then displayed to the end-user. All these operations are carried out in the backend of the AI Time Machine project. The frontend is used to provide an interface to the end-user. APIs are used to communicate between components of the AI Time Machine project. The entire process is streamlined and efficient, requiring minimal operations from the end-user while providing accurate results. Security is an integral part of this process.

4. ARCHITECTURE DIAGRAM

The AI Time Machine has a modular backbone, built in levels that work together without friction. At the front, the user interface is waiting for you—upload your images, look at the results, all built together with HTML, CSS, and JavaScript. Behind it, the backend takes over, driving the process, guiding the data as it moves along, with frameworks like Flask or Node.js keeping everything turning over.

At the heart, the AI model layer is doing all the heavy lifting, looking at and altering images. Maybe there's a temporary storage layer hidden away for when you might need it for processing. APIs connect everything together, allowing for smooth and continuous movement of data.

It's built for scalability and flexibility, with each layer able to function on its own to make maintenance easier. Security is built into all parts, and it's designed to handle multiple users at once, with strategies for load balancing at the



ready. High performance is the aim, and the architecture diagram gives us a clear idea of how data moves through this process. Overall, it's a highly efficient setup.

Fig 1. Architecture diagram

5. INPUT

The AI Time Machine operates on the basis of the image provided by the user, which should be a clear picture of the face of the person in the image. The image should be in the format of JPEG or PNG. While the image is uploaded, there are other choices to be made, like the age progression and the choice of viewing older or younger. The image is checked first, and then the process begins. If the image is not of good quality, the results are not accurate. There are guidelines provided to obtain accurate results. Pre-processing operations are performed on the image to enhance the quality. The image is resized and noise reduction is done.

Security and privacy are important, and the data is handled in the best way. The images are not stored permanently. The process of inputting the image is simple and easy to use. The process is quick and requires minimal effort. The process can handle multiple images and works well with different devices. The input process is flexible, and using the correct input helps in getting the best results. The process is quick, and the input process is efficient and reliable.

6. PSEUDOCODE

The workflow of the AI Time Machine is quite simple and follows a step-by-step procedure. The machine takes the image from the user, then proceeds to normalize the image. The facial features are detected by the AI model, and then the transformation of the image takes place, whether it is aging or de-aging. The image is then processed to enhance the quality of the image, and then the final output is shown to the user.

Pseudo Code:
 START
 INPUT image

CHECK image validity
 PREPROCESS image
 DETECT facial features
 APPLY transformation model
 ENHANCE output image
 DISPLAY result
 END

The system is implemented using the latest technologies available. The front end of the system can be implemented using HTML, CSS, and JavaScript, while the back end can be implemented using Python or Node.js as the programming language. The AI model can be implemented using TensorFlow or PyTorch, and the API can be used to communicate between the front end and the back end of the system. The entire system is quite efficient and can be implemented in a very efficient manner, and it is a robust system.

7.OUTPUT

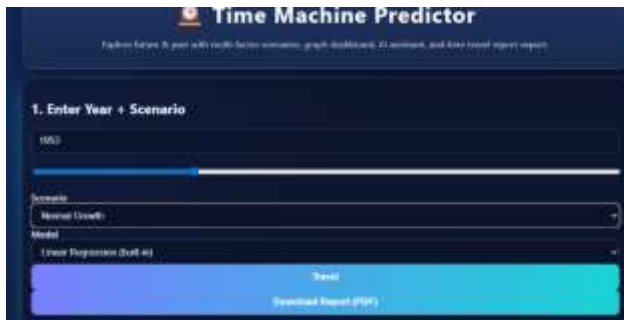


Fig 2

Detailed Forecast Table

Year	Population (B)	Temp (°C)	GDP (T)	AI Adoption %
2021	8.20	1.18	68.8	36
2025	8.31	1.17	71	27.5
2030	8.44	1.2	73.2	19
2035	8.55A	1.21	73.04	14.57
2038	8.656	1.202	75.13	13.08
2040	8.756	1.202	76.8	12.58
2038	8.806	1.202	77.57	12.08
2041	8.891	1.193	78.68	11.57

Fig 3



Fig 4

8.RESULT AND DISCUSSION

The AI Time Machine project is yielding good results. It is able to convincingly transform images, such that there is an obvious change in the features of the faces. The project performs well when given high-quality images; however, it does struggle a bit when given low-quality images. The requests of the users are well attended to in a timely fashion, and the results remain consistent. The application of the project is effective in achieving its intended goal. The feedback of the users is generally positive and motivating. The project is interesting to use, and the analysis of it is honest in highlighting its advantages as well as its disadvantages, including how it can be improved. Moving forward, better versions of AI can take it even further in terms of accuracy. This is an example of an application of AI that is practical in nature, supporting the given methodology by yielding efficient results. The study is an example of AI's potential in creative fields, and there is an opportunity to improve it in the future. Overall, it is an effective project.

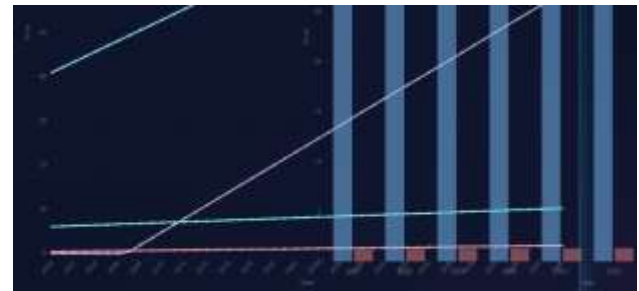


Fig 5. Analyzing The Answer



Fig 6. Prediction dashboard

Time Machine Prediction Report

Year: 1953
 Scenario: normal
 Population 6.1 !' 6.101
 Temperature 0.42 !' 0.42
 GDP 41 !' 41.14
 AI Adoption 0 !' 0.02

Fig 7. Prediction report

9.CONCLUSION

This project intends to develop a smart interview system using AI, which makes the recruitment process easier and faster for a firm or organization. It can analyze a resume and recognize the skills possessed by the candidate, thereby offering a suitable position for the candidate. Additionally, it can ask suitable questions, record the answers given by the candidate in the form of voice, and evaluate them.

It also includes a camera that can recognize the facial expressions of the candidate, thereby understanding the level of confidence possessed by the candidate. It also evaluates the answers given by the candidate through simple text comparisons, which can be used for providing unbiased results. All the results are stored and displayed in a suitable form for easy understanding.

This project can be considered a simple, efficient, and reliable way of conducting an interview with the help of AI.

10.REFERENCE

1. Ian Goodfellow et al., *Deep Learning*, MIT Press, 2016 – for understanding neural networks and image processing concepts.
2. TensorFlow Official Documentation – used for implementing deep learning models for image transformation.
3. PyTorch Documentation – helpful for building and training AI models.
4. OpenCV Library Documentation – used for image preprocessing and facial detection techniques.
5. Flask Documentation – used for backend development and API handling.
6. Node.js Official Website – for server-side scripting and handling requests.
7. React Documentation – used for building interactive user interfaces.
8. Research papers on Generative Adversarial Networks (GANs) for face aging and de-aging techniques.
9. Public datasets such as CelebA Dataset used for training facial recognition and transformation models.
10. W3Schools and MDN Web Docs – for frontend technologies like HTML, CSS, and JavaScript implementation.e.